

WHAT HAPPENS AFTER TWO YEARS ON THE WORKERS' COMPENSATION SYSTEM?

A look at transitions to Centrelink after long periods of inability to work due to an employment-related health problem.

Key Finding

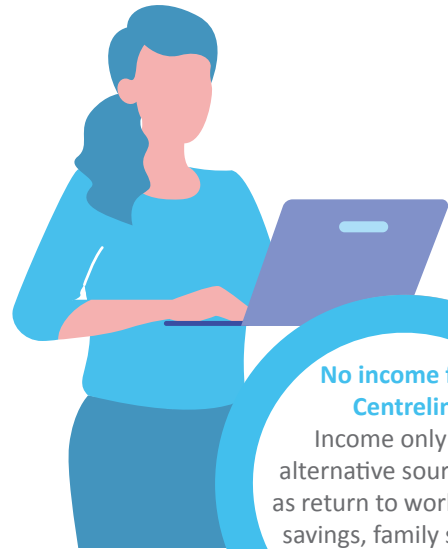
When leaving the workers' compensation system after at least 2 years of weekly payments

42%

received Centrelink income benefits within the following year



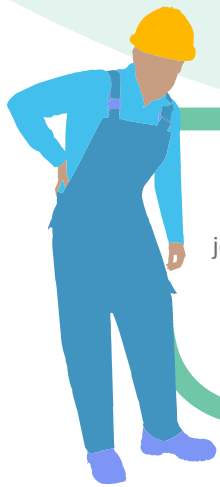
Transitions to Centrelink were 5 times more common than community-levels over the same period



No income from Centrelink

Income only from alternative sources such as return to work, assets/savings, family support, superannuation, other forms of welfare

Workers' Compensation



Injured worker joins the workers' compensation system

Worker accepted onto the workers' compensation system and receives weekly wage replacement payments

At least 2 years later

58%

42%

16%

Unemployment (Newstart) Allowance
Faster transitions

8%

Disability Support Pension
Slower / delayed transitions

13%

Age Pension
If reaching the pension age

42% received Centrelink income benefits (at least 1 type)

centrelink